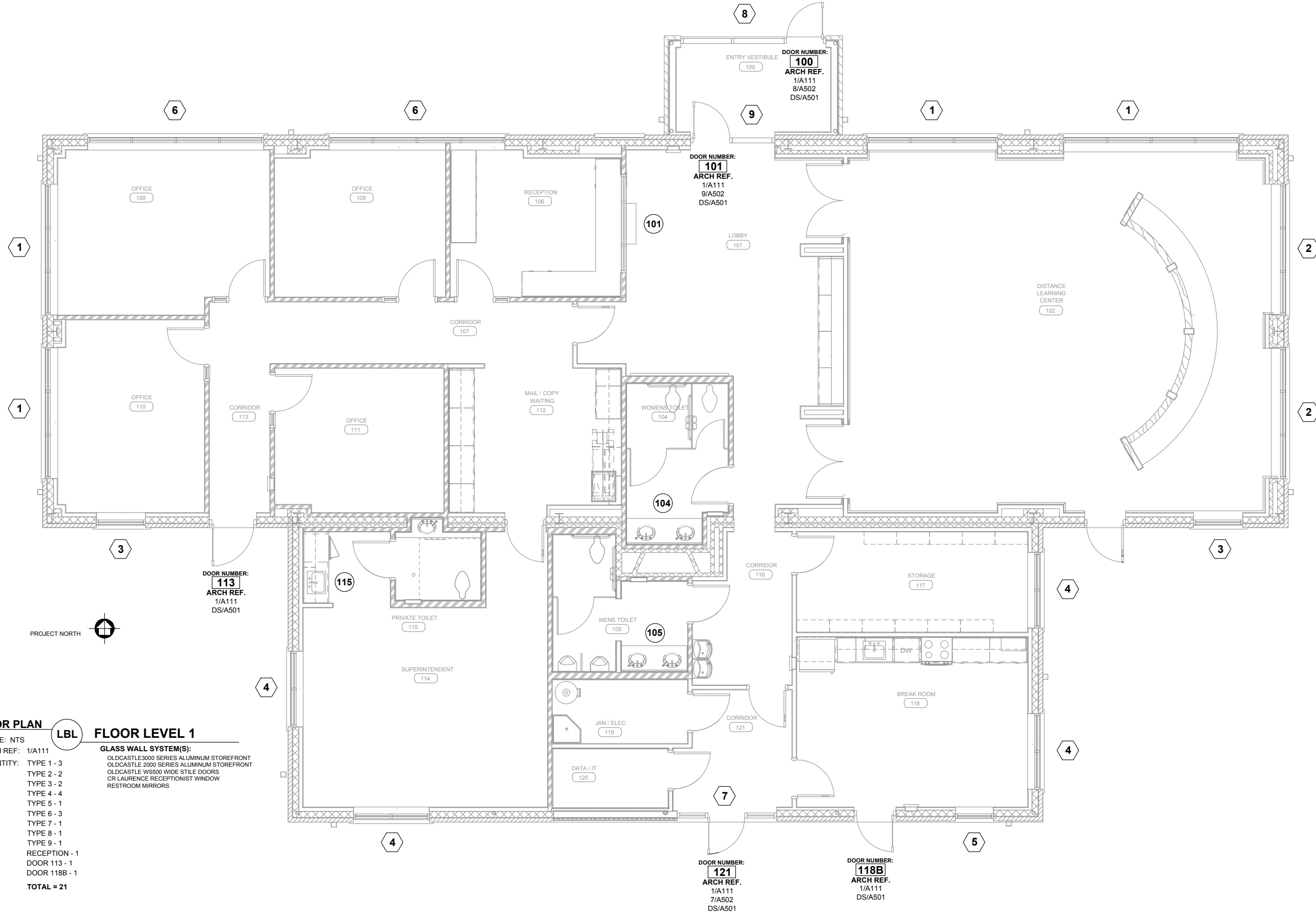


| DATE | DESCRIPTION |
|----------|-----------------|
| 10/28/19 | First Submittal |
| 1 | fp |
| | BY |
| | SUB |

SIX FLAGS GLASS
 108 E AIRLINE RD VICTORIA, TX 77901
 (W) 361-573-9612 (F) 361-573-2334

PROJECT: REFUGIO DISTANCE LEARNING CENTER
BUILDING RENOVATION
 ARCHITECT: BWA ARCHITECTS
 (972) 861-5449
 GENERAL CONTRACTOR: WEAVER & JACOBS CONSTRUCTORS, INC.
 (361) 277-9274

| | |
|-------------|-------------|
| PROJECT NO. | SFG-1906-06 |
| DRAWN BY | fp |
| DATE | 10/28/19 |
| SCALE | NTS |
| DRAWING | FLOOR PLANS |
| SHEET | P1 |



FLOOR PLAN LBL FLOOR LEVEL 1

SCALE: NTS

ARCH REF: 1/A111

- QUANTITY:
- TYPE 1 - 3
 - TYPE 2 - 2
 - TYPE 3 - 2
 - TYPE 4 - 4
 - TYPE 5 - 1
 - TYPE 6 - 3
 - TYPE 7 - 1
 - TYPE 8 - 1
 - TYPE 9 - 1
 - RECEPTION - 1
 - DOOR 113 - 1
 - DOOR 118B - 1

TOTAL = 21

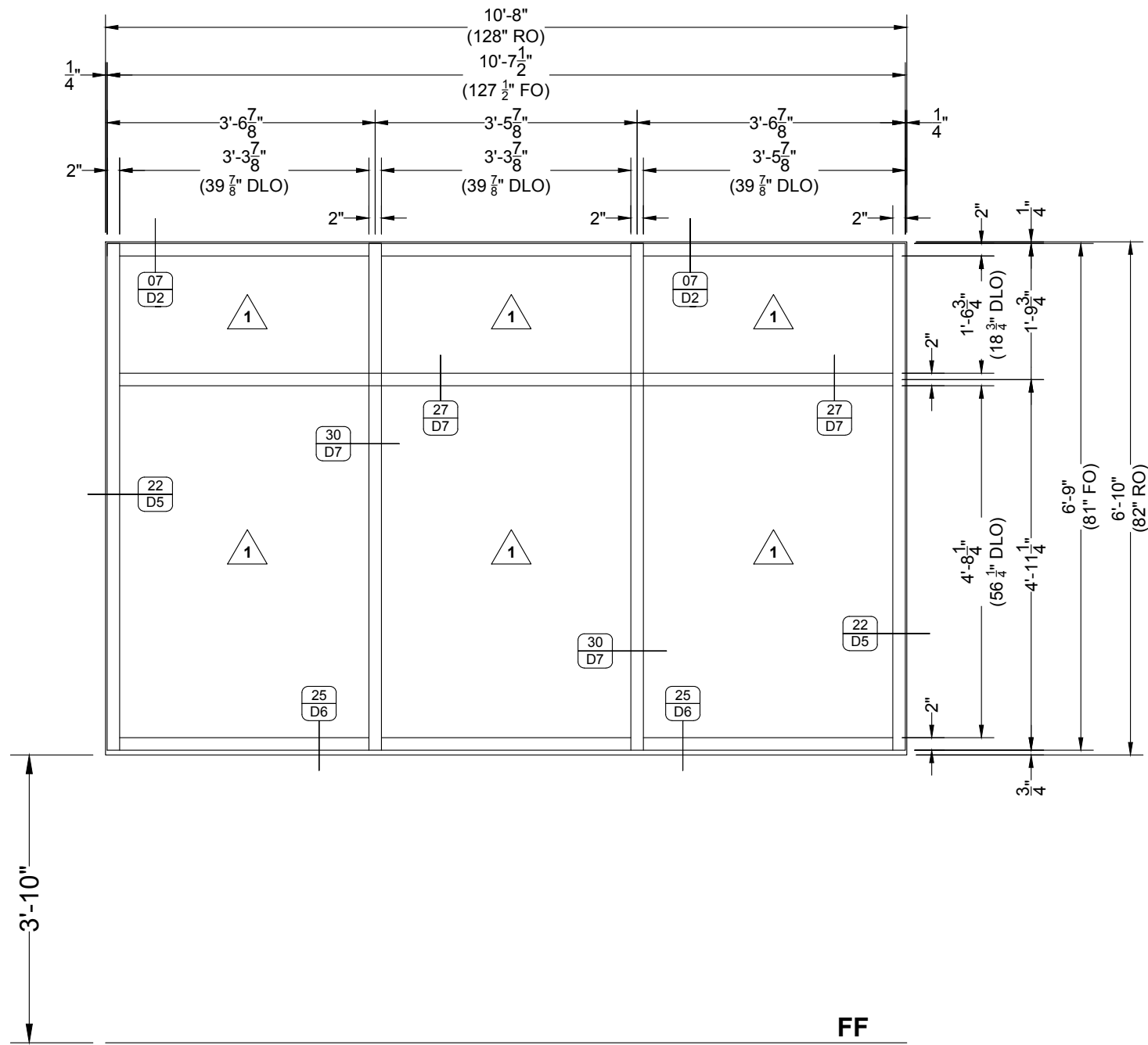
GLASS WALL SYSTEM(S):

- OLDCASTLE3000 SERIES ALUMINUM STOREFRONT
- OLDCASTLE 2000 SERIES ALUMINUM STOREFRONT
- OLDCASTLE WS500 WIDE STILE DOORS
- CR LAURENCE RECEPTIONIST WINDOW
- RESTROOM MIRRORS

| NO. | DATE | DESCRIPTION |
|-----|----------|-----------------|
| 1 | 10/28/19 | First Submittal |

SIX FLAGS GLASS
 108 E AIRLINE RD VICTORIA, TX 77901
 (W) 361-573-9612 (F) 361-573-2334

| | |
|--------------------|--|
| PROJECT | REFUGIO DISTANCE LEARNING CENTER |
| ARCHITECT | BUILDING RENOVATION BWA ARCHITECTS (972) 861-5449 |
| GENERAL CONTRACTOR | WEAVER & JACOBS CONSTRUCTORS, INC. (361) 277-9274 |
| PROJECT NO. | SFG-1906-06 |
| DRAWN BY | fp |
| DATE | 10/28/19 |
| SCALE | 1/2" = 1'-0" |
| DRAWING | ELEVATIONS |
| SHEET | E1 |



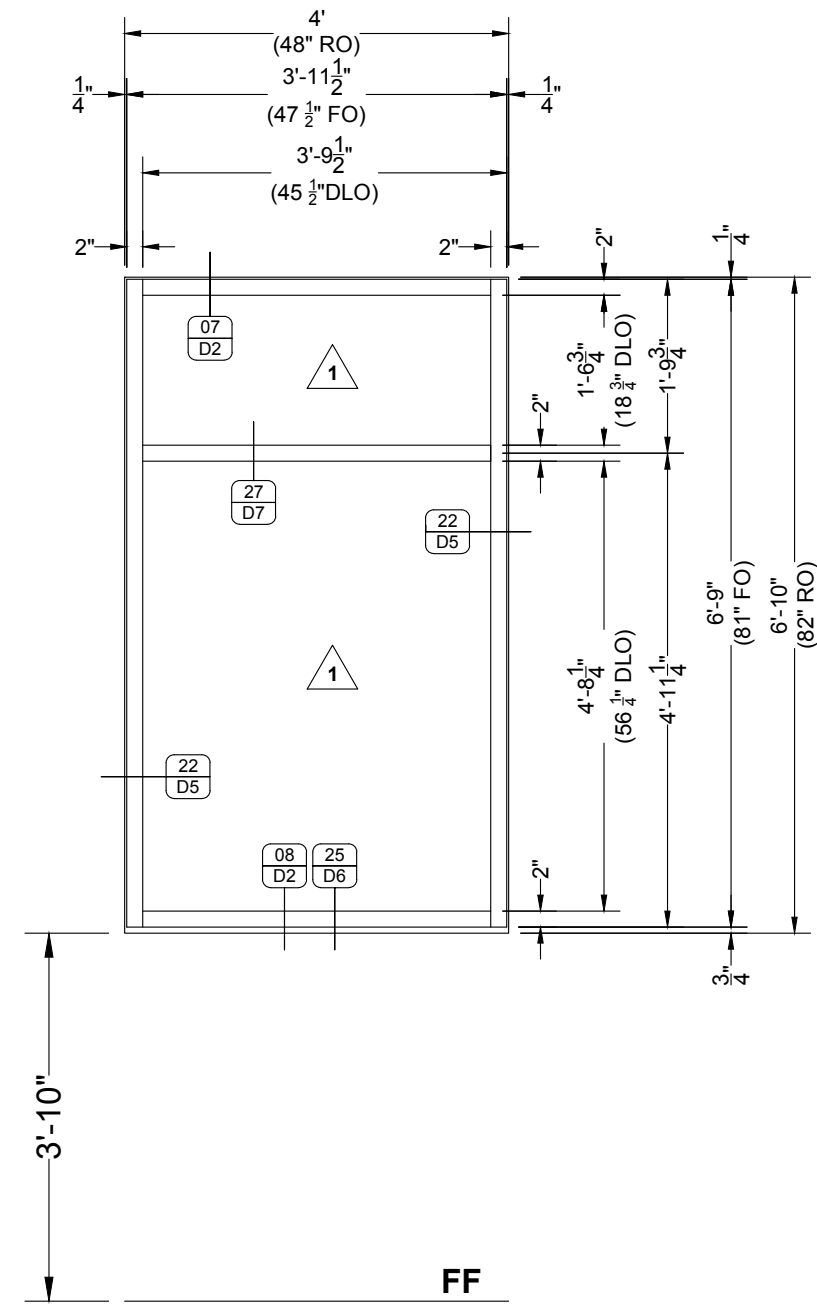
ELEVATION

QUANTITY: 03
 SCALE: 1/2" = 1'-0"
 ARCH REF: 1/A111
 1/A502



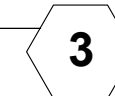
1 ALUMINUM STOREFRONT

OLDCASTLE 3000 SERIES, 2" X 4 1/2" THERMAL MULTIPLANE
 FRONT SET ALUMINUM STOREFRONT FRAMING SYSTEM



ELEVATION

QUANTITY: 02
 SCALE: 1/2" = 1'-0"
 ARCH REF: 1/A111
 3/A502



3 ALUMINUM STOREFRONT

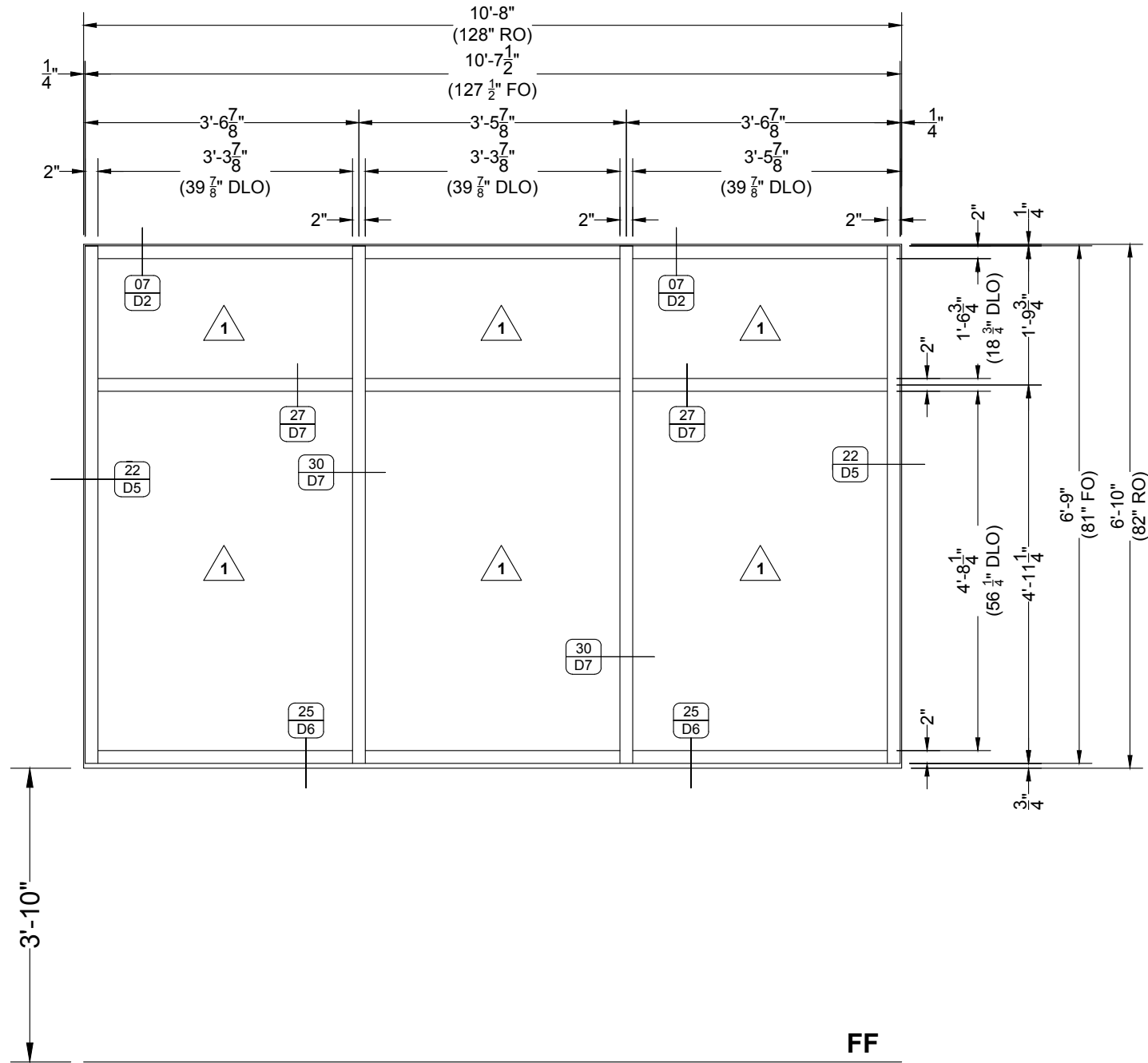
OLDCASTLE 3000 SERIES, 2" X 4 1/2" THERMAL MULTIPLANE
 FRONT SET ALUMINUM STOREFRONT FRAMING SYSTEM

| NO. | DATE | DESCRIPTION |
|-----|----------|-----------------|
| 1 | 10/28/19 | First Submittal |

SIX FLAGS GLASS
 108 E AIRLINE RD VICTORIA, TX 77901
 (W) 361-573-9612 (F) 361-573-2334

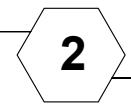
PROJECT: REFUGIO DISTANCE LEARNING CENTER
BUILDING RENOVATION
 ARCHITECT: BWA ARCHITECTS
 (972) 861-5449
 GENERAL CONTRACTOR: WEAVER & JACOBS CONSTRUCTORS, INC
 (361) 277-9274

| | |
|-------------|--------------|
| PROJECT NO. | SFG-1906-06 |
| DRAWN BY | fp |
| DATE | 10/28/19 |
| SCALE | 1/2" = 1'-0" |
| DRAWING | ELEVATIONS |
| SHEET | E2 |



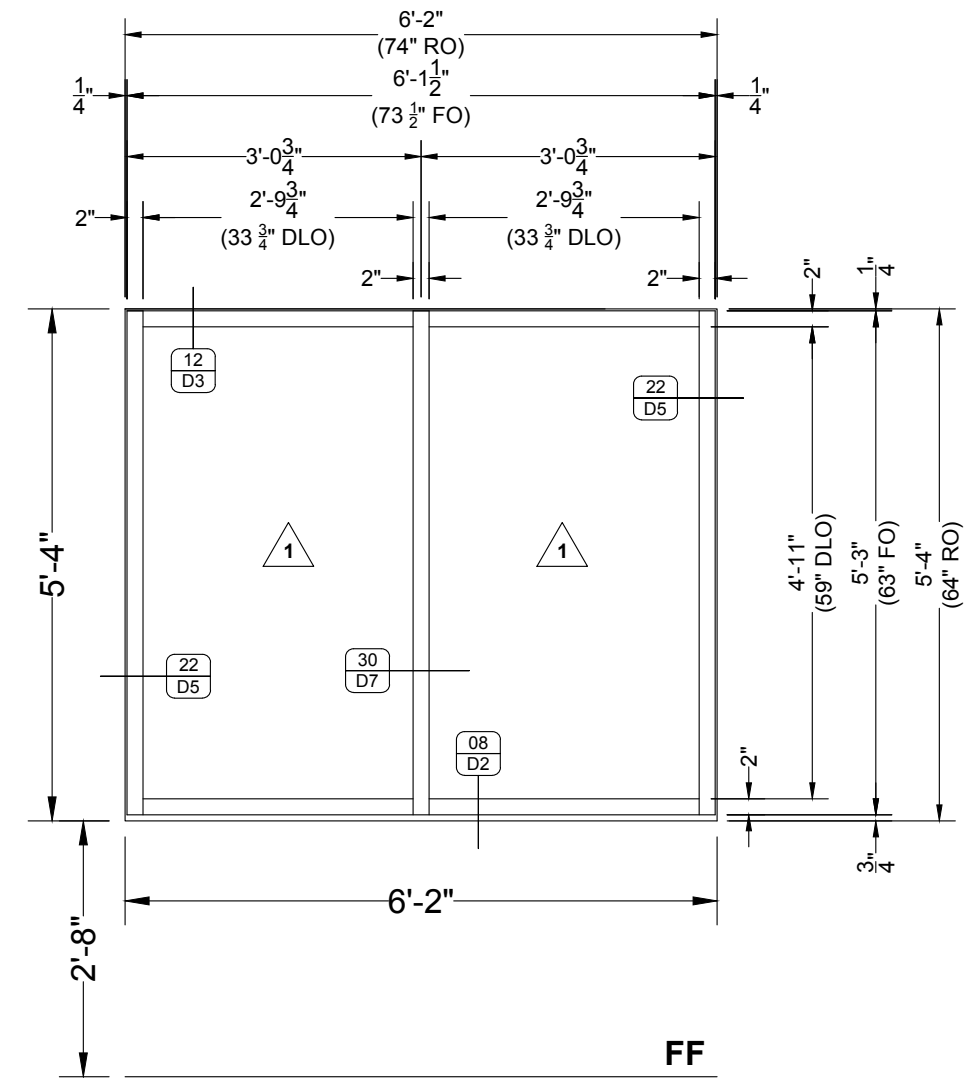
ELEVATION

QUANTITY: 02
 SCALE: 1/2" = 1'-0"
 ARCH REF: 1/A111
 2/A502



ALUMINUM STOREFRONT

OLDCASTLE 3000 SERIES, 2" X 4 1/2" THERMAL MULTIPLANE
 FRONT SET ALUMINUM STOREFRONT FRAMING SYSTEM



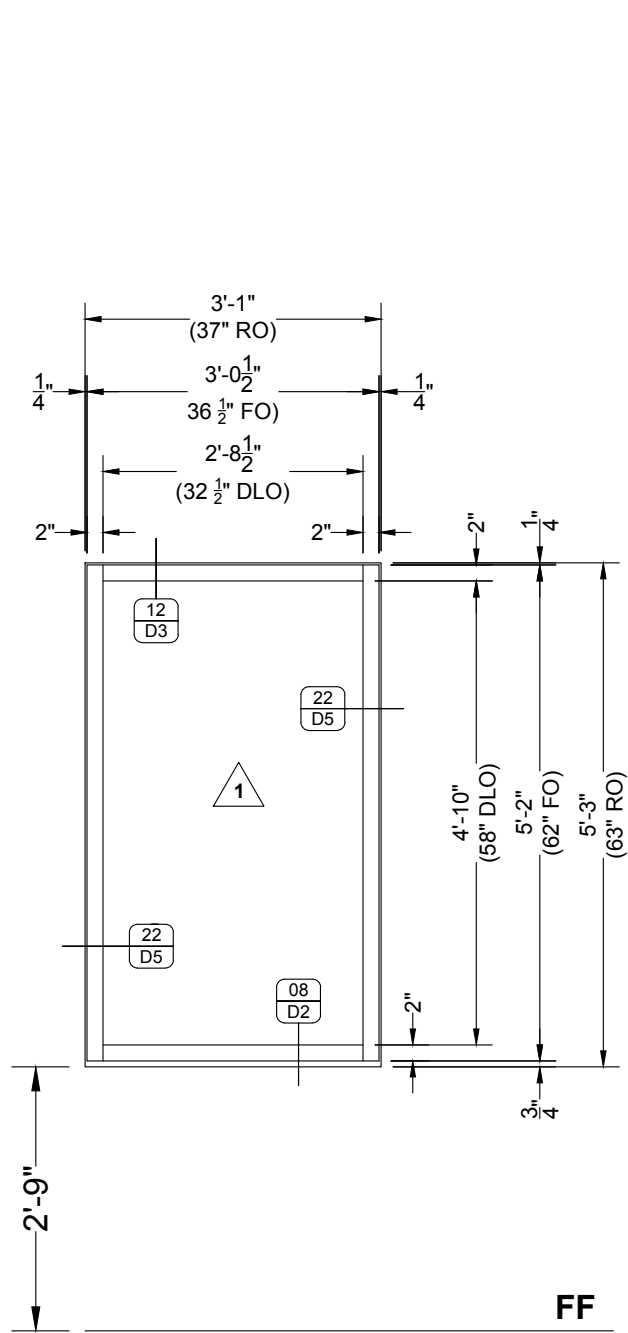
ELEVATION

QUANTITY: 04
 SCALE: 1/2" = 1'-0"
 ARCH REF: 1/A111
 4/A502



ALUMINUM STOREFRONT

OLDCASTLE 3000 SERIES, 2" X 4 1/2" THERMAL MULTIPLANE
 FRONT SET ALUMINUM STOREFRONT FRAMING SYSTEM



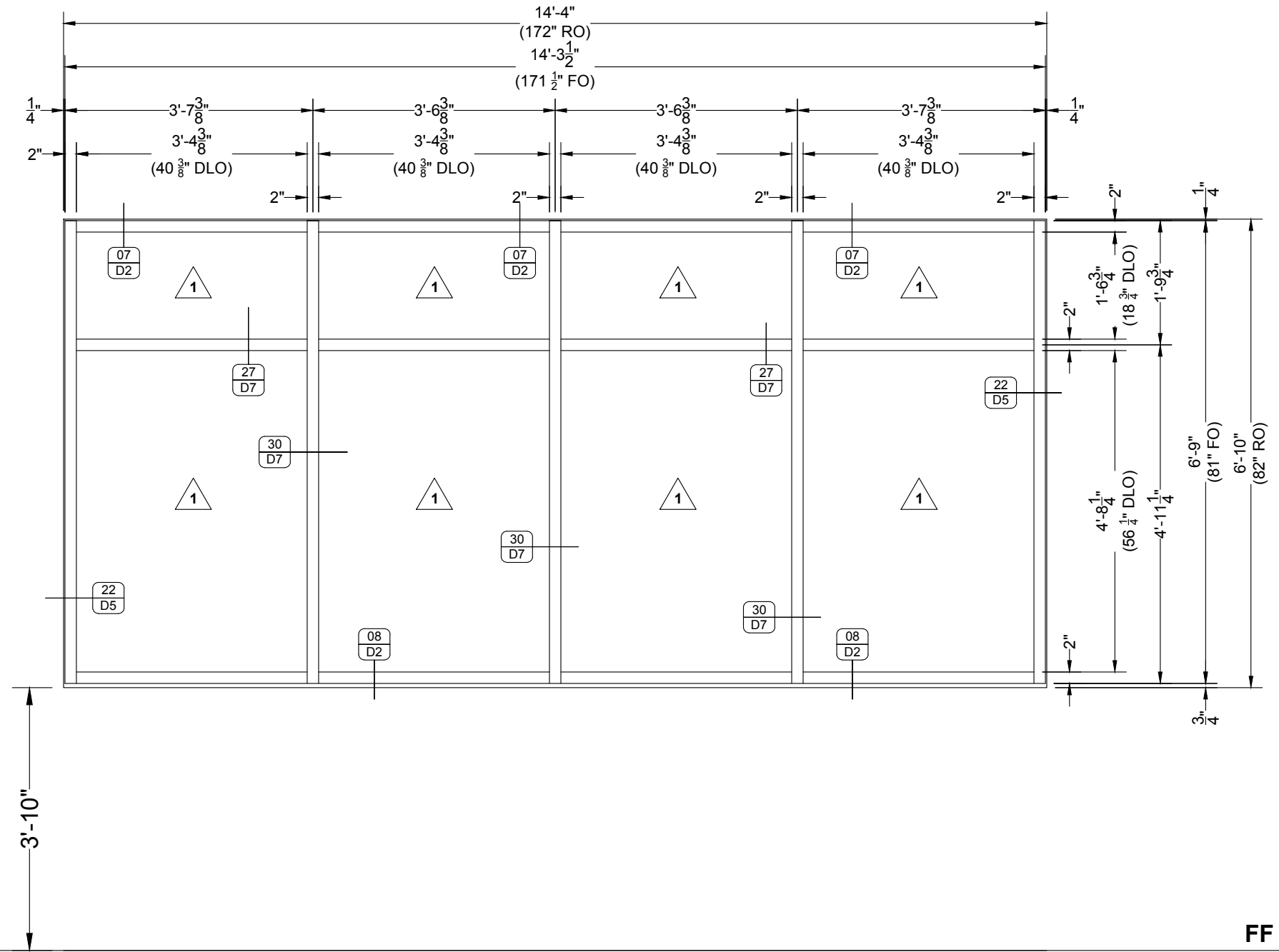
ELEVATION

QUANTITY: 01
 SCALE: 1/2" = 1'-0"
 ARCH REF: 1/A111
 5/A502



ALUMINUM STOREFRONT

OLDCASTLE 3000 SERIES, 2" X 4 1/2" THERMAL MULTIPLANE
 FRONT SET ALUMINUM STOREFRONT FRAMING SYSTEM



ELEVATION

QUANTITY: 03
 SCALE: 1/2" = 1'-0"
 ARCH REF: 1/A111
 6/A502



ALUMINUM STOREFRONT

OLDCASTLE 3000 SERIES, 2" X 4 1/2" THERMAL MULTIPLANE
 FRONT SET ALUMINUM STOREFRONT FRAMING SYSTEM

| NO. | DATE | DESCRIPTION |
|-----|----------|-----------------|
| 1 | 10/28/19 | First Submittal |
| fp | | |

SIX FLAGS GLASS
 108 E AIRLINE RD VICTORIA, TX 77901
 (W) 361-573-9612 (F) 361-573-2334

PROJECT: REFUGIO DISTANCE LEARNING CENTER
BUILDING RENOVATION
 ARCHITECT: BWA ARCHITECTS
 (972) 861-5449
 GENERAL CONTRACTOR: WEAVER & JACOBS CONSTRUCTORS, INC
 (361) 277-9274

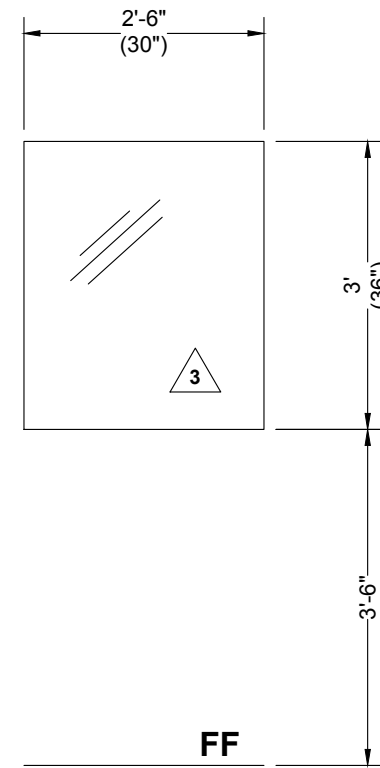
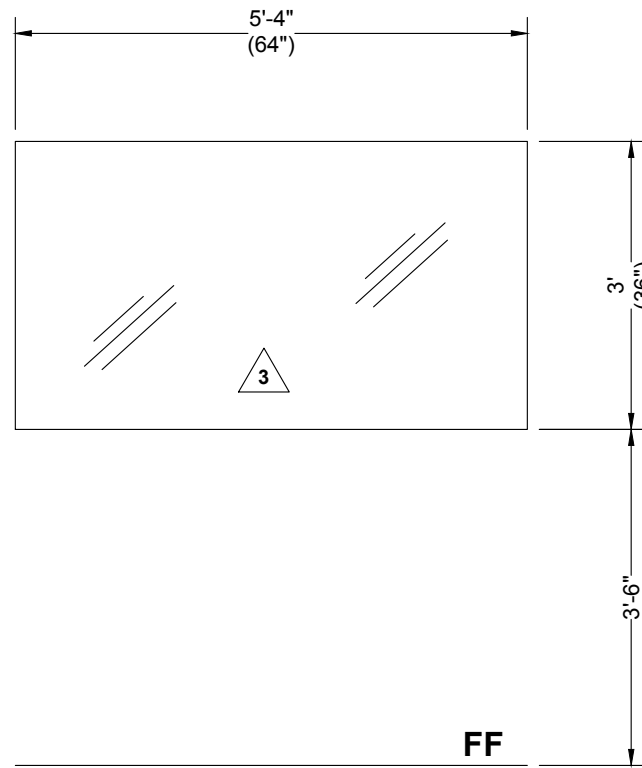
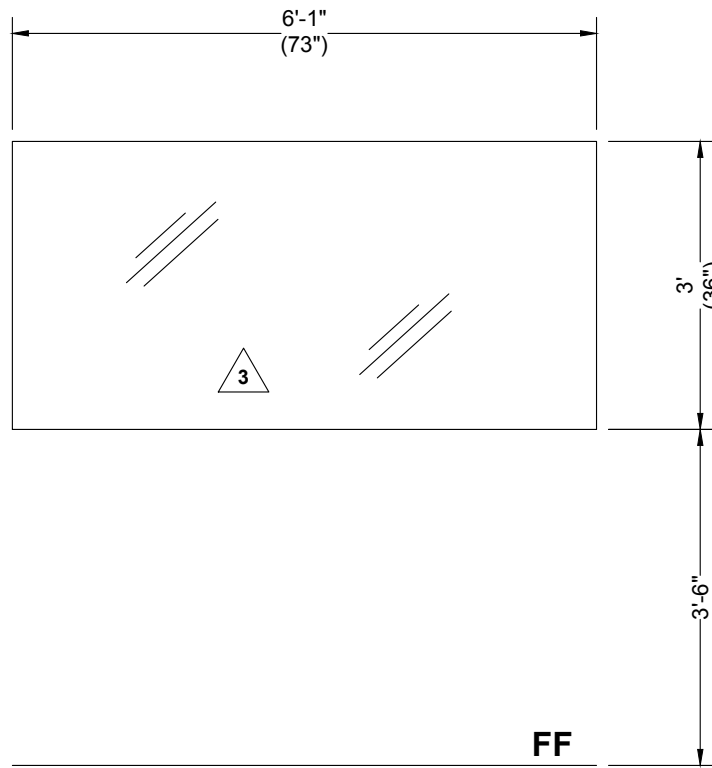
PROJECT NO. SFG-1906-06

DRAWN BY: fp DATE: 10/28/19

SCALE: 1/2" = 1'-0"

DRAWING: ELEVATIONS

SHEET: E3



NOTE: MIRRORS SHALL BE MOUNTED USING CR LAURENCE A D636A BOTTOM RAIL AND THE D645A TOP RAIL.

ELEVATION

QUANTITY: 01
 SCALE: 1/2" = 1'-0"
 ARCH REF: 1/A111
 1/A603

104

VANITY MIRROR

1/4" CLEAR TEMPERED SAFETY GLASS WITH COPPER OR SILVER COATING, ORGANIC COATING, AND RAISED EDGES

ELEVATION

QUANTITY: 01
 SCALE: 1/2" = 1'-0"
 ARCH REF: 1/A111
 5/A603

105

VANITY MIRROR

1/4" CLEAR TEMPERED SAFETY GLASS WITH COPPER OR SILVER COATING, ORGANIC COATING, AND RAISED EDGES

ELEVATION

QUANTITY: 01
 SCALE: 1/2" = 1'-0"
 ARCH REF: 1/A111
 9/A603

115

VANITY MIRROR

1/4" CLEAR TEMPERED SAFETY GLASS WITH COPPER OR SILVER COATING, ORGANIC COATING, AND RAISED EDGES

| NO. | DATE | BY | DESCRIPTION |
|-----|----------|----|-----------------|
| 1 | 10/28/19 | fp | First Submittal |

SIX FLAGS GLASS
 108 E AIRLINE RD VICTORIA, TX 77901
 (W) 361-573-9612 (F) 361-573-2334

PROJECT: REFUGIO DISTANCE LEARNING CENTER
BUILDING RENOVATION
 ARCHITECT: BWA ARCHITECTS
 (972) 861-5449
 GENERAL CONTRACTOR: WEAVER & JACOBS CONSTRUCTORS, INC
 (361) 277-9274

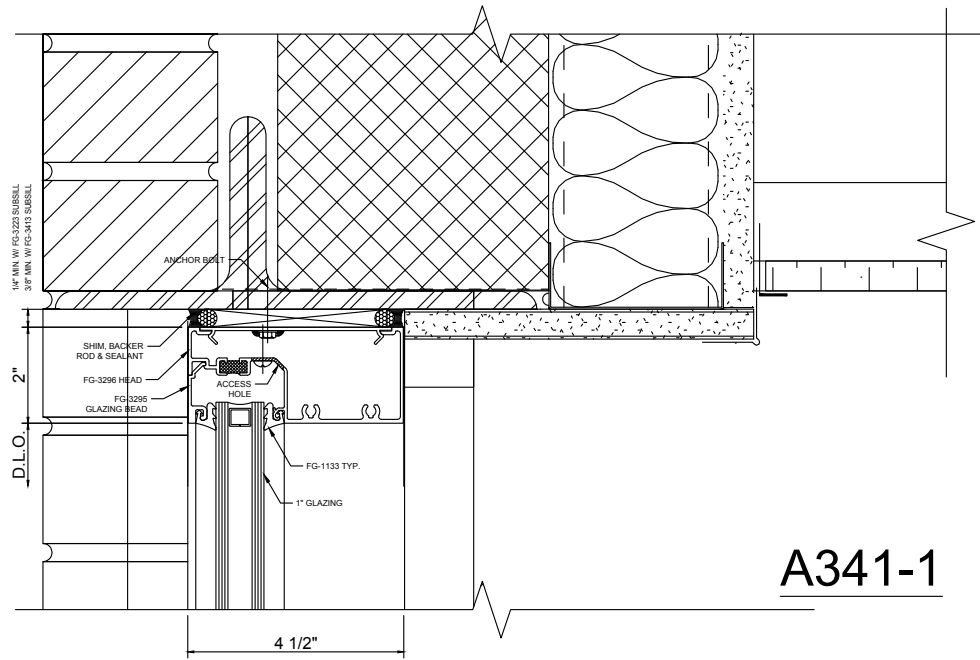
PROJECT NO. SFG-1906-06

DRAWN BY: fp DATE: 10/28/19

SCALE: 1/2" = 1'-0"

DRAWING: ELEVATIONS

SHEET: E7



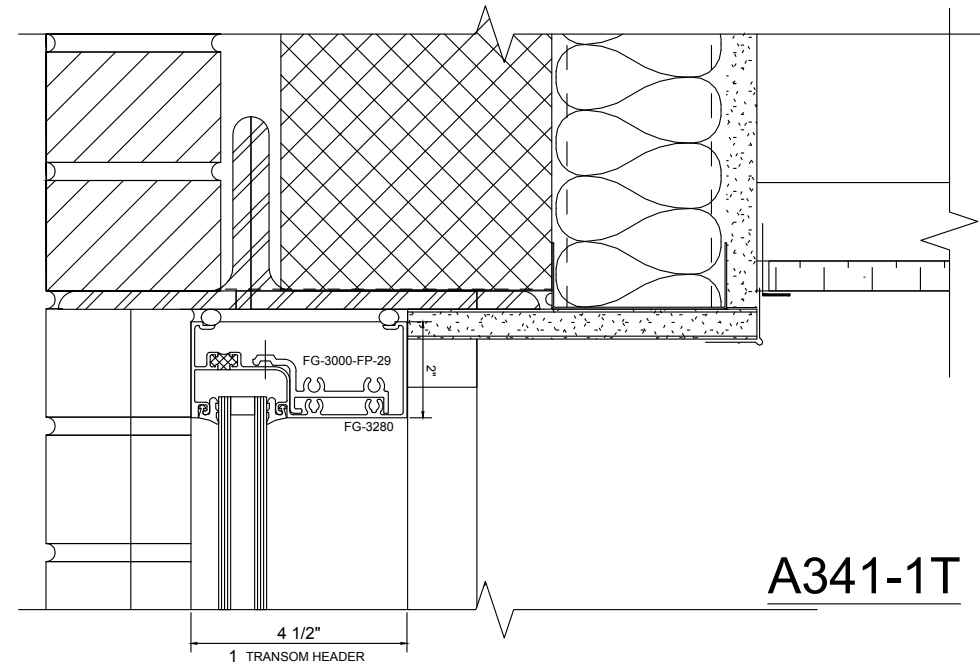
DETAIL

SCALE: 3" = 1'-0"
 ARCH REF: 1/A341
 7/A502

01

HEAD

GLASS WALL SYSTEM TYPE:
 OLDCASTLE 3000 SERIES, 2" X 4 1/2" THERMAL MULTIPLANE
 FRONT SET ALUMINUM STOREFRONT FRAMING SYSTEM



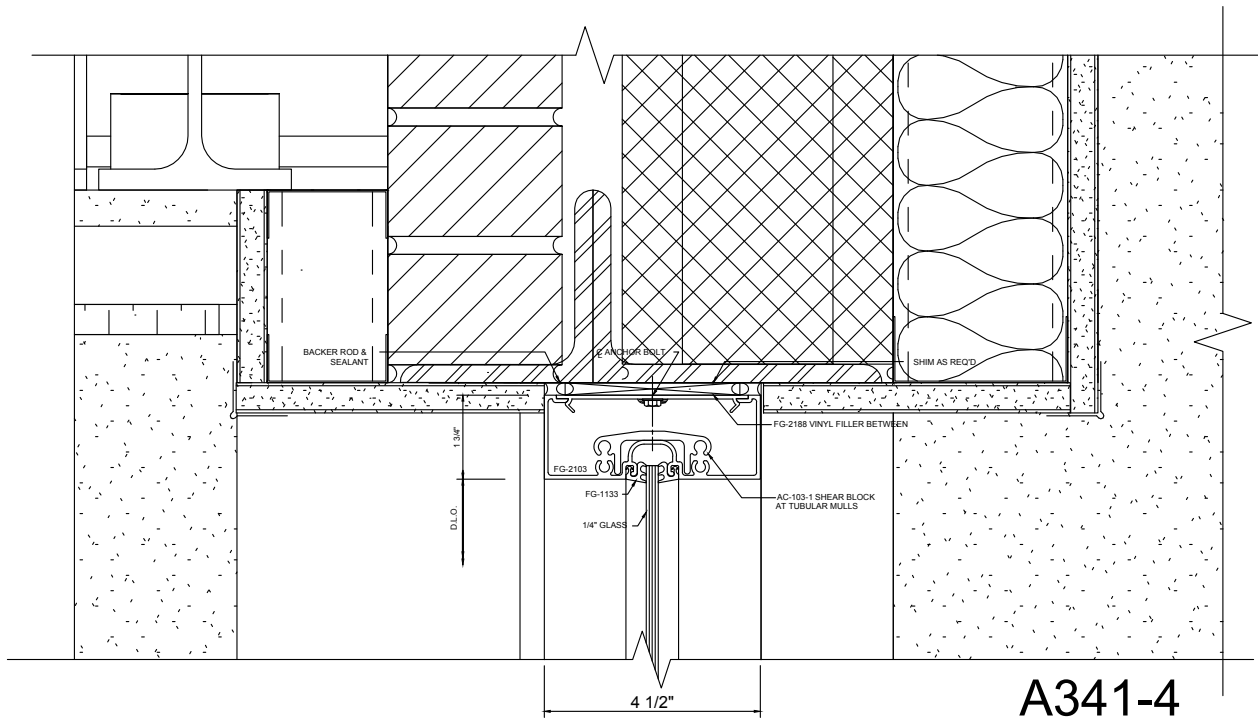
DETAIL

SCALE: 3" = 1'-0"
 ARCH REF: 1/A341
 7/A502

02

TRANSOM HEAD

GLASS WALL SYSTEM TYPE:
 OLDCASTLE 3000 SERIES, 2" X 4 1/2" THERMAL MULTIPLANE
 FRONT SET ALUMINUM STOREFRONT FRAMING SYSTEM



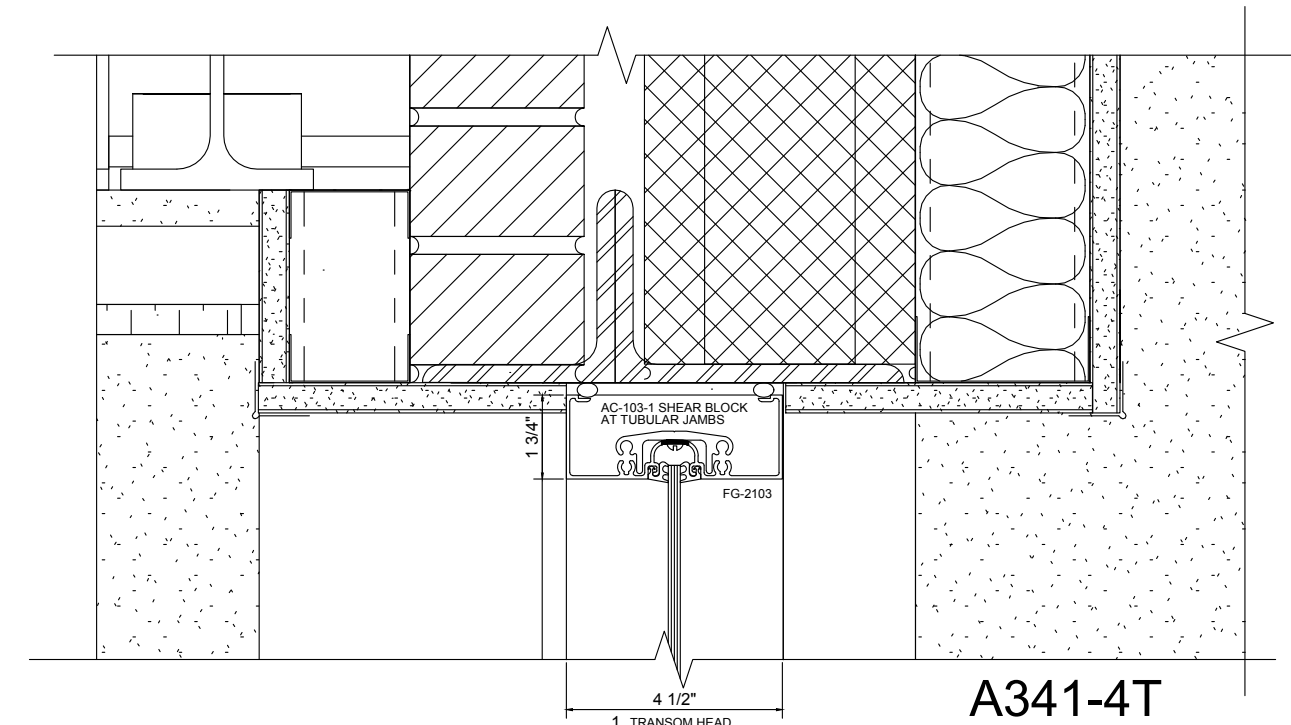
DETAIL

SCALE: 3" = 1'-0"
 ARCH REF: 4/A341
 9/A502

03

HEAD

GLASS WALL SYSTEM TYPE:
 OLDCASTLE 1 3/4" X 4 1/2" TYPE 2000 CENTER SET ALUMINUM
 STOREFRONT FRAMING SYSTEM



DETAIL

SCALE: 3" = 1'-0"
 ARCH REF: 4/A341
 9/A502

04

TRANSOM HEAD

GLASS WALL SYSTEM TYPE:
 OLDCASTLE 1 3/4" X 4 1/2" TYPE 2000 CENTER SET ALUMINUM
 STOREFRONT FRAMING SYSTEM

| NO. | DATE | BY | DESCRIPTION |
|-----|----------|----|-----------------|
| 1 | 10/28/19 | fp | First Submittal |

SIX FLAGS GLASS
 108 E AIRLINE RD VICTORIA, TX 77901
 (W) 361-573-9612 (F) 361-573-2334

PROJECT: REFUGIO DISTANCE LEARNING CENTER
BUILDING RENOVATION
 ARCHITECT: BWA ARCHITECTS
 (972) 861-5449
 GENERAL CONTRACTOR: WEAVER & JACOBS CONSTRUCTORS, INC
 (361) 277-9274

| | |
|-------------|-------------|
| PROJECT NO. | SFG-1906-06 |
| DRAWN BY | fp |
| DATE | 10/28/19 |
| SCALE | 3" = 1'-0" |
| DRAWING | DETAILS |
| SHEET | D1 |